

# WEST WATERLOO

WATERLOO | ONTARIO | CANADA



RETAIL



[ricegroup.ca](http://ricegroup.ca)



# WEST WATERLOO

WATERLOO | ONTARIO | CANADA

RETAIL



COPPER STREET

**COSTCO**  
WHOLESALE

PLATINUM AVENUE

FUTURE  
DEVELOPMENT



ERB STREET W





**930 ERB ST W,  
WATERLOO, ONTARIO N2J 3Z4**



**PROJECT SIZE  
65,000 SQ. FT.**



**6.12 ACRES  
DEVELOPABLE**



**4.43  
/1,000 SQ. FT.**



**SPRING  
2024**

**DEMOGRAPHIC DATA**

**0-5 KM**

Total Population

**91,473**

Total Households

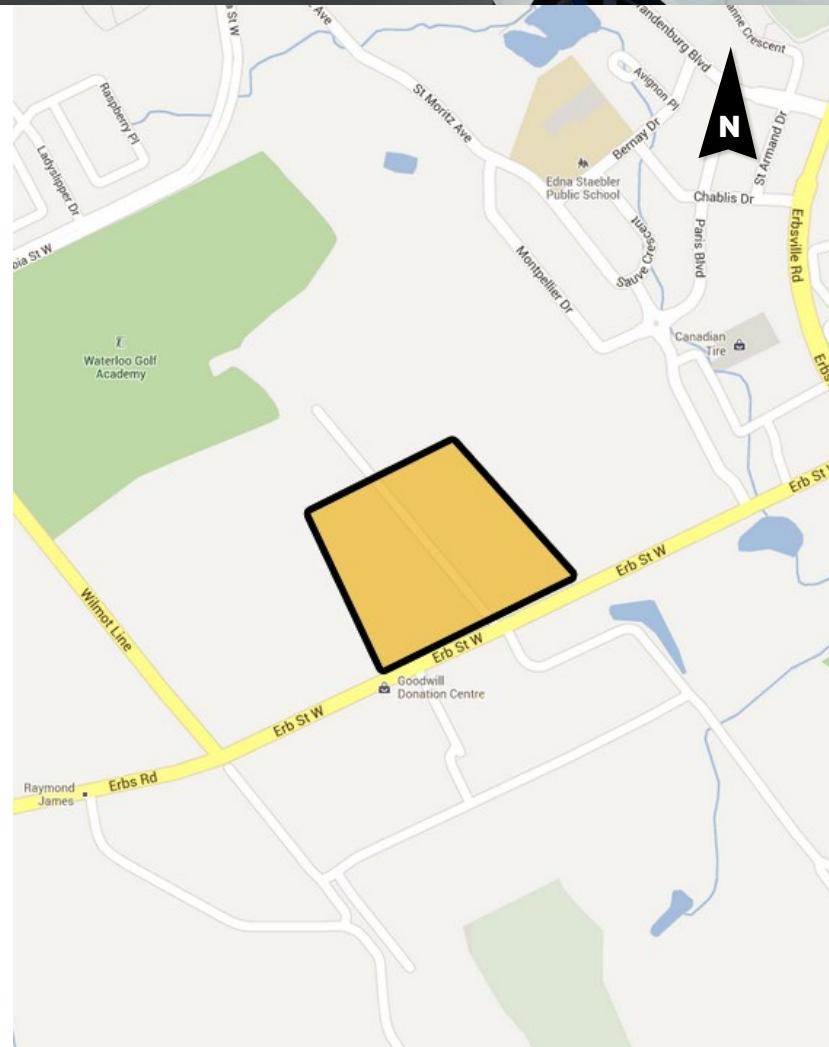
**32,141**

Avg. Household Income

**\$123,941**

Daytime Population

**67,500**



**905.888.1277 | info@ricegroup.ca | ricegroup.ca**  
75 TIVERTON CRT, MARKHAM, ONTARIO, CANADA L3R 4M8

This information is intended for informational purposes only. Rice Group does not warrant or guarantee the accuracy, correctness or completeness of the information. The recipient of this information should take such steps as deemed necessary to verify the information prior to placing any reliance upon the information contained herein.