

# CHOICE **EASTWAY** INDUSTRIAL CENTRE

EAST GWILLIMBURY | ONTARIO | CANADA



INDUSTRIAL

**ChoiceProperties**

[choicereit.ca](http://choicereit.ca)

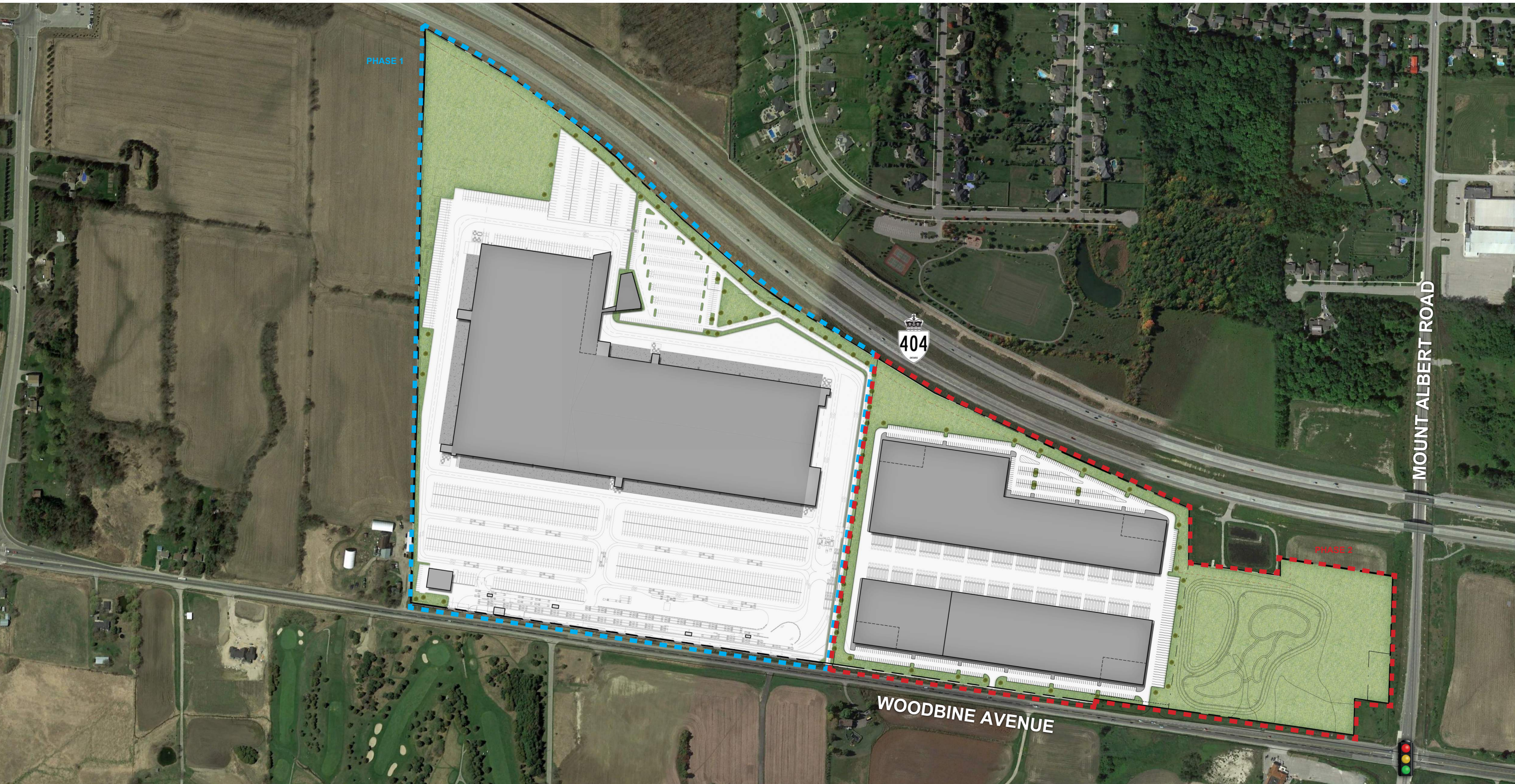


[ricegroup.ca](http://ricegroup.ca)

# CHOICE **EASTWAY** INDUSTRIAL CENTRE

EAST GWILLIMBURY | ONTARIO | CANADA

INDUSTRIAL





**18574 WOODBINE AVENUE  
EAST GWILLIMBURY, ONTARIO**



**145 ACRES  
DEVELOPABLE**



- **1.9 MILLION SQ. FT.**  
OF PRIME BUILDING SPACE
- **UP TO 850,000 SQ. FT.**



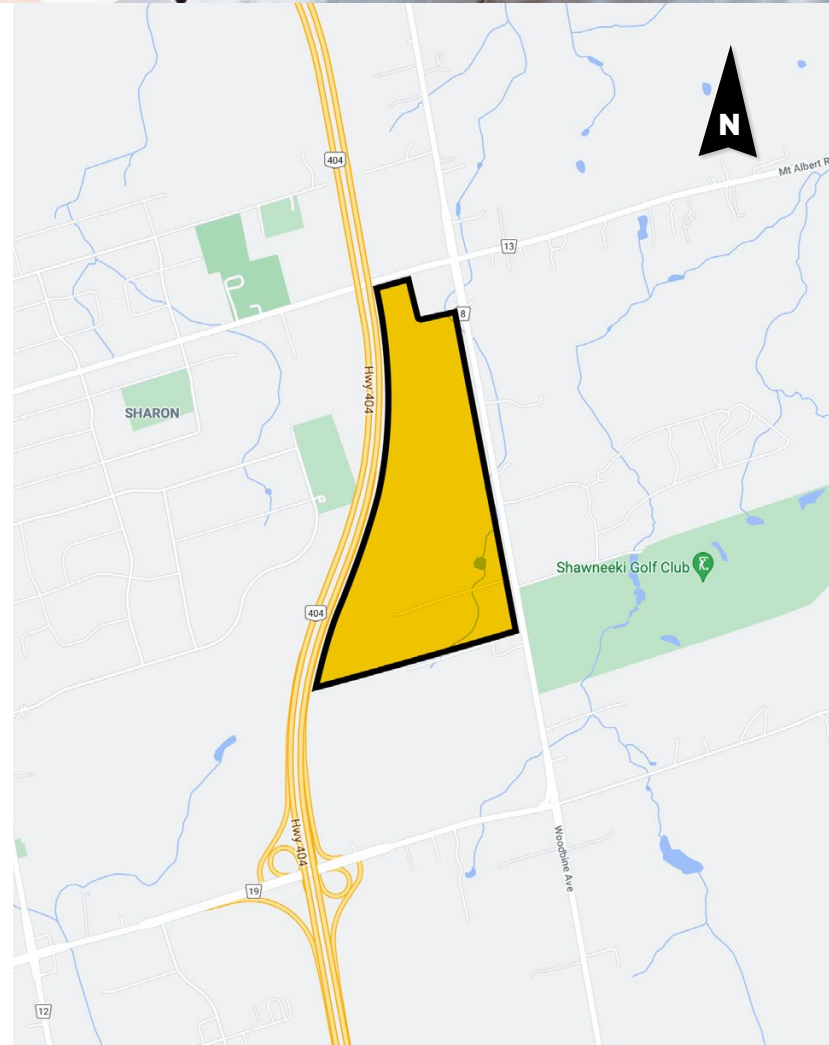
**IDEAL LOGISTICAL  
LOCATION**



**SPRING  
2025**

**DEMOGRAPHIC DATA**    0-5 KM

Total Population	<b>134,193</b>
Total Households	<b>43,857</b>
Avg. Household Income	<b>\$128,395</b>
Daytime Population	<b>124,005</b>



**Choice  
Properties**

**905.888.1277 | info@ricegroup.ca | ricegroup.ca**  
75 TIVERTON CRT, MARKHAM, ONTARIO, CANADA L3R 4M8

This information is intended for informational purposes only. Rice Group does not warrant or guarantee the accuracy, correctness or completeness of the information. The recipient of this information should take such steps as deemed necessary to verify the information prior to placing any reliance upon the information contained herein.